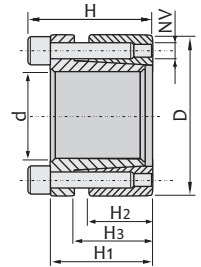


OSOVINSKI POVEZI KLAA

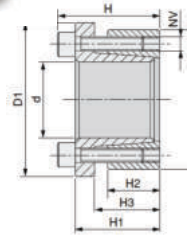
*** Ostale pozicije (dimenzije) na zahtev

Model	Dimenzije						Vijci za stezanje			Vijci za demontažu		Nosivost				Cena €/kom
	d	D	H	H1	H2	H3	NV	Tv (Nm)	Broj šrafa	NV	Broj šrafa	Mt (Nm)	Ta (KN)	Pa (N/mm ²)	Pm (N/m)	
KLAA019	19	47	34	28	17	22	M6x20	13	5	M6x20	3	273	29	262	106	7.90
KLAA020	20	47	34	28	17	22	M6x20	13	5	M6x20	3	287	29	249	106	7.94
KLAA022	22	47	34	28	17	22	M6x20	13	5	M6x20	3	316	29	227	106	8.04
KLAA025	25	50	34	28	17	22	M6x20	13	6	M6x20	3	431	34	239	120	8.67
KLAA028	28	55	34	28	17	22	M6x20	13	6	M6x20	3	482	34	213	109	9.25
KLAA030	30	55	34	28	17	22	M6x20	13	6	M6x20	3	517	34	199	109	9.35
KLAA032	32	60	34	28	17	22	M6x20	13	8	M6x20	4	734	46	249	133	10.60
KLAA035	35	60	34	28	17	22	M6x20	13	8	M6x20	4	803	46	227	133	10.70
KLAA038	38	65	34	28	17	22	M6x20	13	8	M6x20	4	872	46	210	122	11.20
KLAA040	40	65	34	28	17	22	M6x20	13	8	M6x20	4	918	46	199	122	11.37
KLAA042	42	75	41	33	20	25	M8x25	32	7	M8x25	3	1563	74	261	146	15.54
KLAA045	45	75	41	33	20	25	M8x25	32	7	M8x25	3	1674	74	244	146	15.88
KLAA048	48	80	41	33	20	25	M8x25	32	7	M8x25	3	1742	74	232	146	16.74
KLAA050	50	80	41	33	20	25	M8x25	32	7	M8x25	3	1860	74	219	137	17.33
KLAA055	55	85	41	33	20	25	M8x25	32	8	M8x25	4	2340	85	228	148	18.75
KLAA060	60	90	41	33	20	25	M8x25	32	8	M8x25	4	2553	85	209	139	21.03
KLAA070	70	110	50	40	24	30	M10x30	65	8	M10x30	4	4838	138	243	154	37.74
KLAA080	80	120	50	40	24	30	M10x30	65	8	M10x30	4	5530	138	212	142	44.96



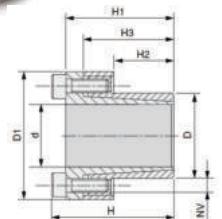
KLAB

Model	Dimenzije							Vijci za stezanje			Vijci za demontažu		Nosivost				Cena €/kom
	d	D	D1	H	H1	H2	H3	NV	Tv (Nm)	Broj šrafa	NV	Broj šrafa	Mt (Nm)	Ta (KN)	Pa (N/mm ²)	Pm (N/m)	
KLAB 020	20	47	56	34	28	17	22	M6x20	17	5	M6x20	3	256	26	222	94	8.61
KLAB 025	25	50	59	34	28	17	22	M6x20	17	6	M6x20	3	383	31	213	106	8.87
KLAB 028	28	55	64	34	28	17	22	M6x20	17	6	M6x20	3	429	31	190	97	9.66
KLAB 030	30	55	64	34	28	17	22	M6x20	17	6	M6x20	3	460	31	177	97	9.91
KLAB 035	35	60	69	34	28	17	22	M6x20	17	8	M6x20	4	716	41	203	118	12.30
KLAB 040	40	65	74	34	28	17	22	M6x20	17	8	M6x20	4	819	41	178	109	13.81
KLAB 045	45	75	84	41	33	20	25	M8x25	41	7	M8x25	3	1458	65	212	127	18.34
KLAB 050	50	80	89	41	33	20	25	M8x25	41	7	M8x25	3	1620	65	191	119	19.86
KLAB 060	60	90	99	41	33	20	25	M8x25	41	8	M8x25	4	2223	74	182	121	24.37
KLAB 070	70	110	119	50	40	24	30	M10x30	83	8	M10x30	4	4203	120	211	134	39.23
KLAB 080	80	120	129	50	40	24	30	M10x30	83	8	M10x30	4	4804	120	184	123	42.05



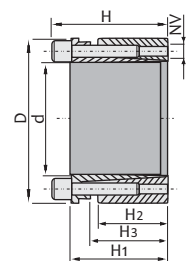
KLCC

Model	Dimenzije							Vijci za stezanje			Vijci za demontažu		Nosivost				Cena €/kom
	d	D	D1	H	H1	H2	H3	NV	Tv (Nm)	Broj šrafa	NV	Broj šrafa	Mt (Nm)	Ta (KN)	Pa (N/mm ²)	Pm (N/m)	
KLCC 015	15	24	45	42	36	16	29	M6x18	17	3	M6x18	2	120	16	196	123	11.11
KLCC 020	20	28	49	44	38	18	31	M6x18	17	4	M6x18	3	213	21	174	124	11.38
KLCC 025	25	34	56	51	45	25	38	M6x18	17	4	M6x18	3	266	21	100	74	15.38
KLCC 030	30	41	63	51	45	25	38	M6x18	17	6	M6x18	3	480	32	126	92	16.16
KLCC 032	32	43	65	56	50	30	43	M6x18	17	6	M6x18	3	511	32	98	73	19.41
KLCC 035	35	47	69	56	50	30	43	M6x18	17	8	M6x18	4	747	43	120	89	22.18
KLCC 040	40	53	75	58	52	32	45	M6x18	17	9	M6x18	4	959	48	110	83	27.08
KLCC 045	45	59	85	72	64	40	56	M8x22	42	8	M8x22	4	1781	79	130	99	37.26
KLCC 050	50	65	92	82	74	50	66	M8x22	42	10	M8x22	5	2473	99	117	90	47.81
KLCC 060	60	77	104	82	74	50	66	M8x22	42	10	M8x22	5	2968	99	97	76	60.24
KLCC 070	70	90	122	101	91	60	80	M10x25	84	8	M10x25	4	4430	127	89	69	76.62
KLCC 080	80	100	131	106	96	65	85	M10x25	84	12	M10x25	5	7595	190	108	86	92.67



KLDA

Model	Dimenzije						Vijci za stezanje			Vijci za demontažu		Nosivost				Cena €/kom
	d	D	H	H1	H2	H3	NV	Tv (Nm)	Broj šrafa	NV	Broj šrafa	Mt (Nm)	Ta (KN)	Pa (N/mm ²)	Pm (N/m)	
KLDA 019	19	47	45	39	26	31	M6x25	17	4	M6x25	2	307	32	193	78	8.46
KLDA 020	20	47	45	39	26	31	M6x25	17	4	M6x25	2	323	32	183	78	9.83
KLDA 022	22	47	45	39	26	31	M6x25	17	4	M6x25	2	355	32	166	78	10.40
KLDA 024	24	50	45	39	26	31	M6x25	17	6	M6x25	3	382	48	229	110	10.81
KLDA 025	25	50	45	39	26	31	M6x25	17	6	M6x25	3	606	48	220	110	11.36
KLDA 028	28	55	45	39	26	31	M6x25	17	6	M6x25	3	679	48	196	100	11.56
KLDA 030	30	55	45	39	26	31	M6x25	17	6	M6x25	3	727	48	183	100	11.74
KLDA 032	32	60	45	39	26	31	M6x25	17	8	M6x25	4	1033	65	229	122	13.02
KLDA 035	35	60	45	39	26	31	M6x25	17	8	M6x25	4	1130	65	209	122	15.04
KLDA 038	38	65	45	39	26	31	M6x25	17	8	M6x25	4	1227	65	193	113	15.31
KLDA 040	40	65	45	39	26	31	M6x25	17	8	M6x25	4	1292	65	183	113	16.15
KLDA 042	42	75	55	47	30	36	M8x30	41	6	M8x30	3	1835	87	204	115	19.02
KLDA 045	45	75	55	47	30	36	M8x30	41	6	M8x30	3	1966	87	191	115	22.12
KLDA 048	48	80	55	47	30	36	M8x30	41	6	M8x30	3	2097	87	179	107	22.97
KLDA 050	50	80	55	47	30	36	M8x30	41	6	M8x30	3	2184	87	172	107	24.19
KLDA 055	55	85	55	47	30	36	M8x30	41	8	M8x30	4	3202	116	208	135	25.77
KLDA 060	60	90	55	47	30	36	M8x30	41	8	M8x30	4	3493	116	191	127	30.04
KLDA 065	65	95	55	47	30	36	M8x30	41	8	M8x30	4	3784	116	176	120	32.29
KLDA 070	70	110	67	57	40	46	M10x35	83	8	M10x35	4	6607	189	199	127	52.27



cene su bez PDV-a

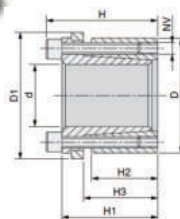
Cene su podložne promenama - postoji mogućnost odobravanja rabata
+381 18 226 364, 018 222 927, 064 89 00 735

www.ami.rs

KLDB

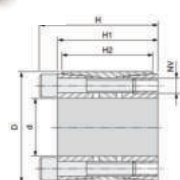
*** Ostale pozicije (dimenzije) na zahtev

Model	Dimenzije							Vijci za stezanje			Vijci za demontažu		Nosivost				Cena €/kom
	d	D	D1	H	H1	H2	H3	NV	Tv (Nm)	Broj šrafa	NV	Broj šrafa	Obrtni momenat		Pritisak		
													Mt (Nm)	Ta (KN)	Pa (N/mm ²)	Pm (N/m)	
KLDB 020	20	47	53	45	39	26	31	M6x20	17	4	M6x20	2	213	21	121	51	11.74
KLDB 025	25	50	56	45	39	26	31	M6x20	17	6	M6x20	3	400	32	145	73	12.79
KLDB 030	30	55	61	45	39	26	31	M6x20	17	6	M6x20	3	480	32	121	66	13.00
KLDB 035	35	60	66	45	39	26	31	M6x20	17	8	M6x20	4	747	43	138	81	16.56
KLDB 040	40	65	71	45	39	26	31	M6x20	17	8	M6x20	4	853	43	121	74	17.93
KLDB 045	45	75	81	55	47	30	36	M8x30	41	6	M8x30	3	1302	58	126	76	24.13
KLDB 050	50	80	86	55	47	30	36	M8x30	41	6	M8x30	3	1447	58	114	71	26.40
KLDB 060	60	90	96	55	47	30	36	M8x30	41	8	M8x30	4	2317	77	127	84	33.04
KLDB 070	70	110	116	67	57	40	46	M10x35	83	8	M10x35	4	4381	125	132	84	51.00
KLDB 080	80	120	126	72	62	40	46	M10x35	83	8	M10x35	4	5007	125	115	77	69.43



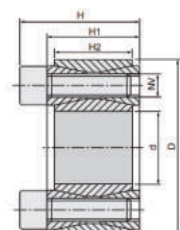
KLEE

Model	Dimenzije					Vijci za stezanje			Vijci za demontažu		Nosivost				Cena €/kom
	d	D	H	H1	H2	NV	Tv (Nm)	Broj šrafa	NV	Broj šrafa	Obrtni momenat		Pritisak		
											Mt (Nm)	Ta (KN)	Pa (N/mm ²)	Pm (N/m)	
KLEE 025	25	55	46	40	32	M6x35	17	6	M6x35	3	799	64	314	107	15.45
KLEE 030	30	55	46	40	32	M6x35	17	6	M6x35	3	959	64	262	107	15.78
KLEE 035	35	60	60	54	44	M6x45	17	7	M6x45	3	1306	75	185	83	20.34
KLEE 040	40	75	62	54	44	M8x50	41	7	M8x50	3	2702	135	293	121	27.54
KLEE 045	45	75	62	54	44	M8x50	41	7	M8x50	3	3040	135	260	121	27.66
KLEE 050	50	80	72	64	56	M8x55	41	8	M8x55	4	3861	154	207	102	34.74
KLEE 060	60	90	72	64	56	M8x55	41	10	M8x55	4	5793	193	216	113	43.08
KLEE 080	80	120	88	78	70	M10x60	83	11	M10x60	4	13768	344	227	121	73.00
KLEE 090	90	130	88	78	70	M10x60	83	12	M10x60	5	16898	376	220	122	83.49
KLEE 095	95	135	88	78	70	M10x60	83	12	M10x60	5	17837	376	208	117	84.60



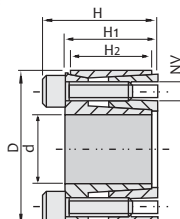
KLG

Model	Dimenzije					Vijci za stezanje			Vijci za demontažu		Nosivost				Cena €/kom
	d	D	H	H1	H2	NV	Tv (Nm)	Broj šrafa	NV	Broj šrafa	Obrtni momenat		Pritisak		
											Mt (Nm)	Ta (KN)	Pa (N/mm ²)	Pm (N/mm ²)	
KLGG 019	19	47	26	20	17	M6x18	14.9	8	M8	2	298	31	286	116	10.74
KLGG 020	20	47	26	20	17	M6x18	14.9	8	M8	2	313	31	272	116	11.18
KLGG 022	22	47	26	20	17	M6x18	14.9	8	M8	2	345	31	247	116	11.42
KLGG 024	24	50	26	20	17	M6x18	14.9	9	M8	3	424	35	255	123	12.01
KLGG 025	25	50	26	20	17	M6x18	14.9	9	M8	3	441	35	245	123	12.04
KLGG 028	28	55	26	20	17	M6x18	14.9	10	M8	3	549	39	243	124	12.91
KLGG 030	30	55	26	20	17	M6x18	14.9	10	M8	3	588	39	227	124	13.02
KLGG 032	32	60	26	20	17	M6x18	14.9	12	M8	4	758	47	255	136	13.38
KLGG 035	35	60	26	20	17	M6x18	14.9	12	M8	4	822	47	233	136	13.00
KLGG 038	38	65	26	20	17	M6x18	14.9	14	M8	4	1042	55	250	146	15.66
KLGG 040	40	65	26	20	17	M6x18	14.9	14	M8	4	1097	55	238	146	14.35
KLGG 042	42	75	32	24	20	M8x22	35	12	M10	4	1740	83	291	163	17.85
KLGG 045	45	75	32	24	20	M8x22	35	12	M10	4	1864	83	271	163	20.38
KLGG 048	48	80	32	24	20	M8x22	35	12	M10	4	1988	83	254	153	20.82
KLGG 050	50	80	32	24	20	M8x22	35	12	M10	4	2071	83	244	153	21.60
KLGG 060	60	90	32	24	20	M8x22	35	14	M10	4	2900	64	238	158	29.16
KLGG 070	70	110	38	28	24	M10x25	69	14	M12	4	5345	153	268	171	39.88
KLGG 080	80	120	38	28	24	M10x25	69	14	M12	4	6108	153	235	156	43.39



KLHH

Model	Dimenzije					Vijci za stezanje			Vijci za demontažu		Nosivost				Cena €/kom
	d	D	H	H1	H2	NV	Tv (Nm)	Broj šrafa	NV	Broj šrafa	Obrtni momenat		Pritisak		
											Mt (Nm)	Ta (KN)	Pa (N/mm ²)	Pm (N/mm ²)	
KLHH020	20	42	24	18	14,7	M6x16	17	4	M6x16	2	183	18,0	167	79	8.68
KLHH025	25	47	24	18	14,7	M6x16	17	6	M6x16	3	343	27,0	200	106	9.90
KLHH030	30	52	24	18	14,7	M6x16	17	6	M6x16	3	412	27,0	167	96	10.65
KLHH035	35	57	28	22	18,0	M6x18	17	6	M6x18	3	480	27,0	117	78	13.02
KLHH040	40	62	28	22	18,0	M6x18	17	8	M6x18	4	732	36,5	136	88	14.07
KLHH045	45	73	36	28	23,5	M8x25	42	8	M8x25	4	1529	68,0	172	106	17.91
KLHH050	50	78	36	28	23,5	M8x25	42	8	M8x25	4	1699	68,0	155	99	19.51
KLHH060	60	88	36	28	23,5	M8x25	42	8	M8x25	4	2039	68,0	129	88	23.65
KLHH070	70	105	45	35	30,0	M10x30	83	8	M10x30	4	3759	107,0	137	91	39.00
KLHH080	80	115	45	35	30,0	M10x30	83	10	M10x30	4	4296	107,0	120	83	40.12



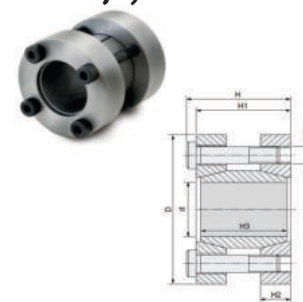
cene su bez PDV-a

Cene su podložne promenama - postoji mogućnost odobravanja rabata
+381 18 226 364, 018 222 927, 064 89 00 735

www.ami.rs

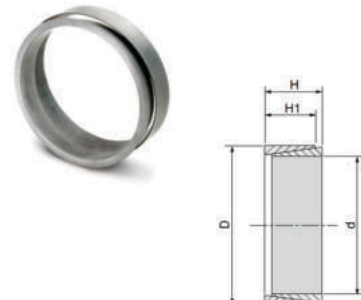
KLMM

*** Ostale pozicije (dimenzije) na zahtev



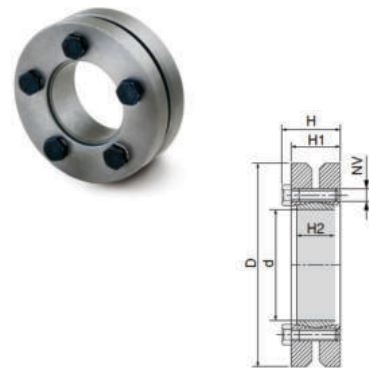
Model	Dimenzije						Vijci za stezanje			Nosivost			Cena €/kom
										Obrtni mom.		Pritisak	
	d	D	H	H1	H2	H3	NV	Tv (Nm)	Broj šrafa	Mt (Nm)	Ta (KN)	Pa (N/mm ²)	
KLMM 020	20	50	56	50	16	44	M6x45	17	4	211	21	141	12.03
KLMM 024	24	55	66	60	18.5	54	M6x55	17	6	378	32	144	15.72
KLMM 025	25	55	66	60	18.5	54	M6x55	17	6	394	32	138	15.80
KLMM 030	30	60	66	60	18.5	54	M6x55	17	6	473	32	115	18.30
KLMM 035	35	75	83	75	22	67	M8x70	42	4	682	39	98	25.86
KLMM 040	40	75	83	75	22	67	M8x70	42	4	780	39	86	30.02
KLMM 045	45	85	93	85	24.5	76	M8x80	42	6	1317	59	101	33.66

KLNN



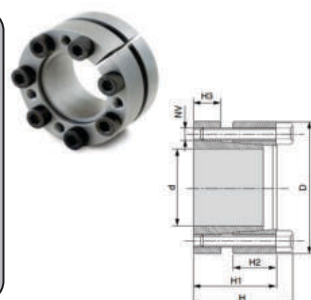
Model	Dimenzije				Nosivost					Cena €/kom
					Obrtni moment			Pritisak		
	d	D	H	H1	Mt (Nm)	Ta (KN)	Tm (KN)	Pa (N/mm ²)	Pm (N/mm ²)	
KLNN 020	20	25	6.3	5.3	38.8	3.88	30.1	100	79	2.95
KLNN 025	25	30	6.3	5.3	61.7	4.94	32.4	100	84	2.95
KLNN 030	30	35	6.3	5.3	88.2	5.88	35.5	100	86	3.02
KLNN 035	35	40	7	6	136	7.76	45.7	100	88	3.13
KLNN 040	40	45	8	6.6	195	9.8	58.8	100	89	3.53
KLNN 045	45	52	10	8.6	323	14.3	92.2	100	87	4.18
KLNN 050	50	57	10	8.6	397	15.9	96.5	100	88	4.55
KLNN 060	60	68	12	10.4	691	23	133.4	100	88	5.91
KLNN 070	70	79	14	12.2	1107	31.6	176	100	89	7.58
KLNN 080	80	91	17	15	1769	44.2	251	100	89	9.66

KLPP



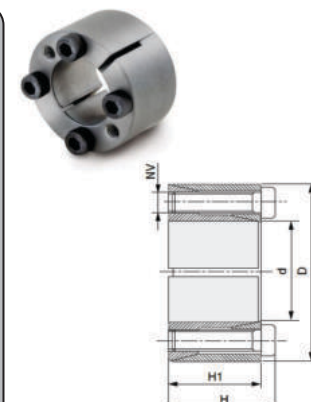
Model	Dimenzije						Vijci za stezanje			Nosivost			Cena €/kom
										Obrtni momenat		Pritisak	
	d	D	D1	H	H1	H2	NV	Tv (Nm)	Broj šrafa	Mt (Nm)	Ta (KN)	Pa (N/mm ²)	
KLPP 024	24	50	19	23	19.5	14	M5x18	4	6	216	23.0	272	8.82
			21							314			
KLPP 030	30	60	24	25	21.5	16	M5x18	4	7	372	31.0	221	11.76
			26							461			
KLPP 036	36	72	28	27.5	23.5	18	M6x20	12	5	550	39.3	292	12.57
			30							713			
KLPP 044	44	80	32	29.5	25.5	20	M6x20	12	7	925	57.8	301	15.12
			36							1275			
KLPP 050	50	90	38	31.5	27.5	22	M6x25	12	8	1313	69.1	275	19.08
			42							1925			

KLRR



Model	Dimenzije						Vijci za stezanje			Vijci za demontažu		Nosivost			Cena €/kom	
												Obrtni momenat		Pritisak		
	d	D	H	H1	H2	H3	NV	Tv (Nm)	Broj šrafa	NV	Broj šrafa	Mt (Nm)	Ta (KN)	Pa (N/mm ²)		Pm (N/m)
KLRR 020	20	47	34	28	14	10	M6x25	13	5	M6x25	3	294	29	328	139	8.13
KLRR 025	25	50	34	28	14	10	M6x25	14	6	M6x25	3	474	38	338	169	9.00
KLRR 030	30	55	34	28	14	10	M6x25	14	6	M6x25	3	569	38	282	154	10.08
KLRR 035	35	60	34	28	14	10	M6x25	14	8	M6x25	4	885	51	322	188	11.28
KLRR 040	40	65	34	28	14	10	M6x25	14	8	M6x25	4	1012	51	282	174	14.70
KLRR 045	45	75	43	35	18	12	M8x30	32	7	M8x30	4	1707	76	293	176	16.47
KLRR 050	50	80	43	35	18	12	M8x30	32	7	M8x30	4	1897	76	263	165	17.55
KLRR 060	60	90	43	35	18	12	M8x30	32	8	M8x30	4	2604	87	251	167	20.91
KLRR 070	70	110	56	46	24	16	M10x40	65	8	M10x40	4	4937	141	262	167	34.47

KLSS



Model	Dimenzije				Vijci za stezanje			Vijci za demontažu		Nosivost			Cena €/kom	
										Obrtni momenat		Pritisak		
	d	D	H	H1	NV	Tv (Nm)	Broj šrafa	NV	Broj šrafa	Mt (Nm)	Ta (KN)	Pa (N/mm ²)		Pm (N/m)
KLSS 010	10	20	15.5	13	M2.5x12	1.2	4	M2.5x12	2	19	3.8	89	45	6.66
KLSS 011	11	22	15.5	13	M2.5x12	1.2	4	M2.5x12	2	21	3.8	81	41	6.78
KLSS 012	12	22	15.5	13	M2.5x12	1.2	4	M2.5x12	2	23	3.8	75	41	6.87
KLSS 014	14	26	20	17	M3x16	2.1	4	M3x16	2	39	5.5	71	38	7.20
KLSS 015	15	28	20	17	M3x16	2.1	4	M3x16	2	42	5.5	66	35	7.32
KLSS 018	18	35	25	21	M4x20	4.9	4	M4x20	2	87	9.6	77	40	12.55
KLSS 020	20	38	26	21	M5x20	10	4	M5x20	2	157	15.7	113	60	10.07
KLSS 025	25	47	32	26	M6x24	17	4	M6x25	2	279	22.3	105	56	14.07
KLSS 030	30	55	32	26	M6x24	17	6	M6x25	3	502	33.5	132	72	17.31
KLSS 035	35	60	37	31	M6x28	17	8	M6x30	4	781	44.6	125	73	21.06
KLSS 040	40	65	37	31	M6x28	17	8	M6x30	4	892	44.6	110	67	22.69
KLSS 045	45	75	44	36	M8x34	41	6	M8x35	3	1363	60.6	113	68	28.18
KLSS 050	50	80	44	36	M8x34	41	8	M8x35	4	2019	80.8	136	85	30.81

*** Svi osovinski povezi izrađeni su od materijala čelik C45

Cene su podložne promenama - postoji mogućnost odobravanja rabata
+381 18 226 364, 018 222 927, 064 89 00 735

www.ami.rs